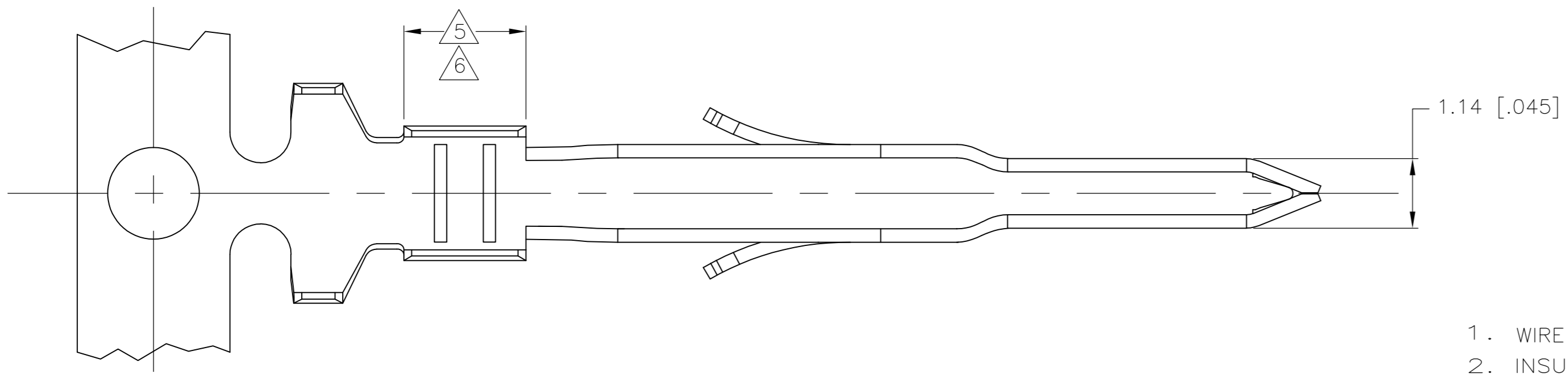
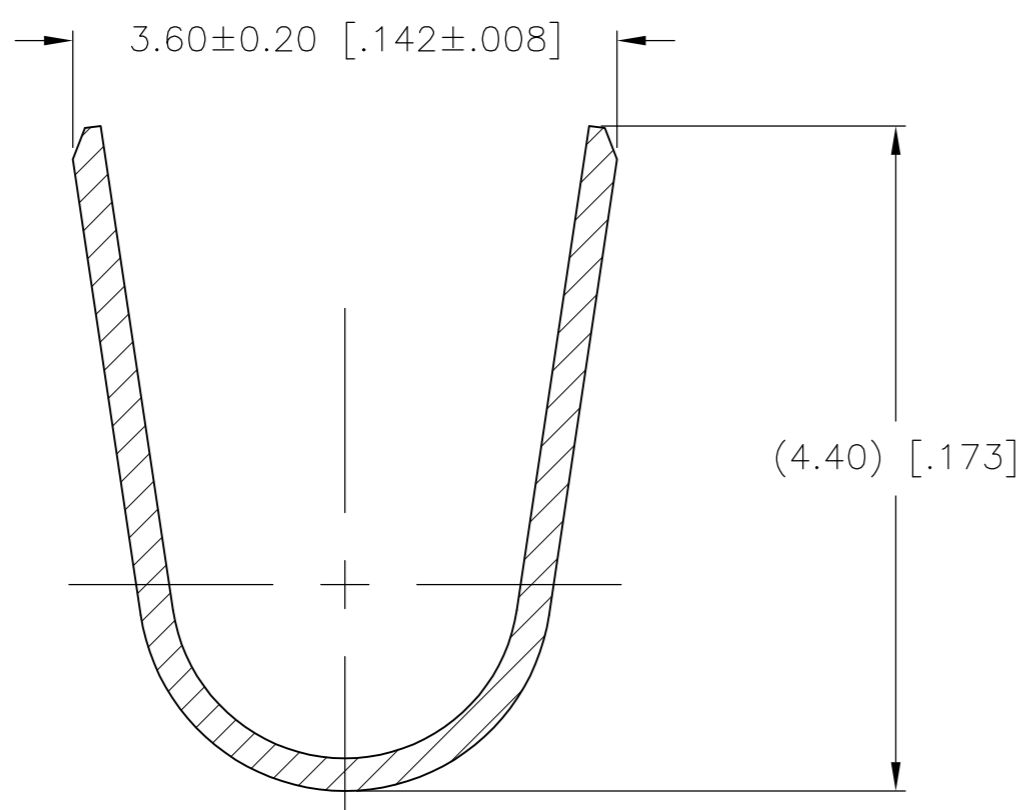
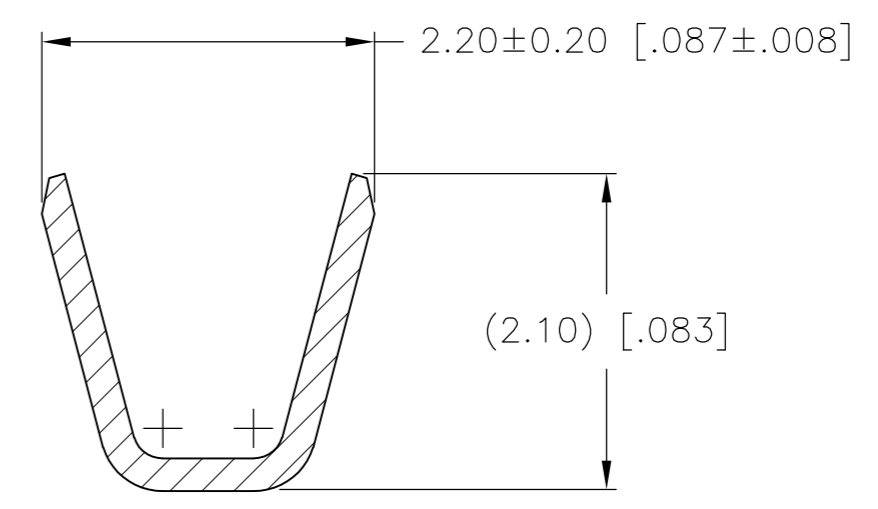
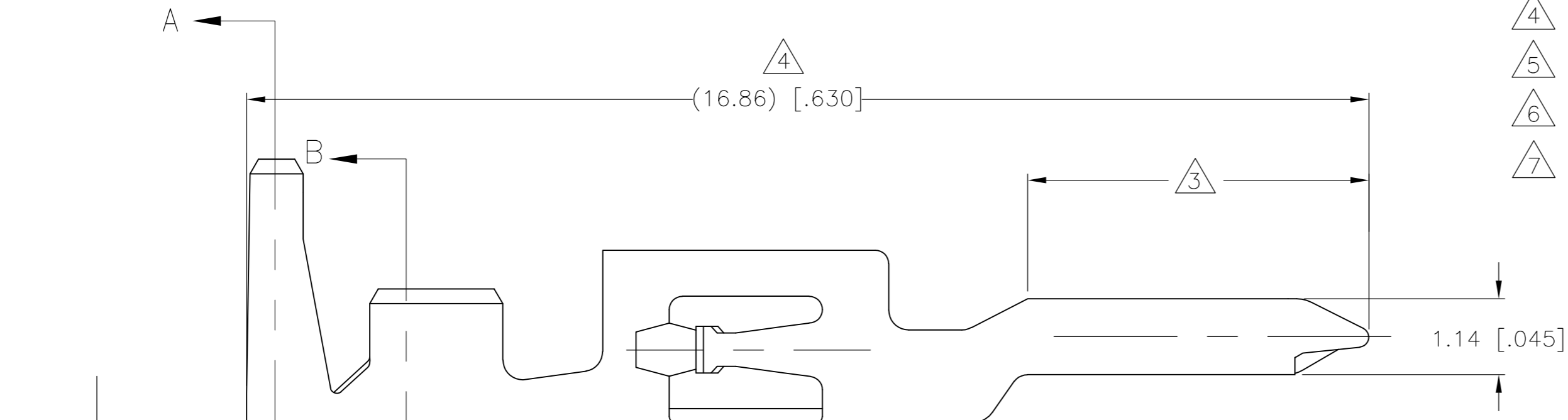


THIS DRAWING IS UNPUBLISHED. RELEASED FOR PUBLICATION
 © COPYRIGHT BY TYCO ELECTRONICS CORPORATION. ALL RIGHTS RESERVED.

LOC		DIST		REVISIONS			
P	LTR	DESCRIPTION		DATE	DWN	APVD	
	D	REVISED PER 0G3B-1115-04		23JUNE05	KW	DC	
	D1	REVISED PER ECO-09-023313		09OCT09	KK	AEG	



1. WIRE RANGE: 0.30-0.87mm² (22-18 AWG).
2. INSULATION RANGE: 1.50-2.40 DIA.
- 3 FINISH: 0.76μm MINIMUM GOLD OVER 1.27μm MINIMUM NICKEL REQUIRED
- 4 FINISH: NICKEL BASE PLATE ON ALL SURFACES IN THIS AREA.
- 5 FINISH: 2.54μm MINIMUM TIN-LEAD ON ALL SURFACES IN THIS AREA.
- 6 FINISH: 2.54μm MINIMUM TIN ON ALL SURFACES IN THIS AREA.
- 7 OBSOLETE PARTS: OBSOLETE CIS STREAMLINING PER D.RENAUD/D.SINISI



FINISH	MATERIAL	PART NUMBER
3 4 6	0.22[.009] PHOS BRONZE	794576-4
3 4 5	0.22[.009] PHOS BRONZE	794576-2-
PRE-TIN	0.22[.009] PHOS BRONZE	794576-1

METRIC

THIS DRAWING IS A CONTROLLED DOCUMENT.

DIMENSIONS: mm [INCHES]	TOLERANCES UNLESS OTHERWISE SPECIFIED: 0 PLC ± 1 PLC ± 2 PLC ± 0.10 [.004] 3 PLC ± 4 PLC ± ANGLES ±	DWN S. HOOVER 07-FEB-2003 CHK D. COLEY 07-FEB-2003 APVD D. COLEY 07-FEB-2003	Tyco Electronics Tyco Electronics Corporation Harrisburg, Pa 17105-3608	
MATERIAL 0.22 [.009]PH BRZ FINISH SEE TABLE		PRODUCT SPEC 108-1646 APPLICATION SPEC 114-6067 WEIGHT CUSTOMER DRAWING	NAME CONTACT, MALE, AMP-DUAC(TM) SIZE A2 CAGE CODE 00779 C=794576 DRAWING NO. 14:1 RESTRICTED TO -	SHEET 1 OF 1 REV D1